



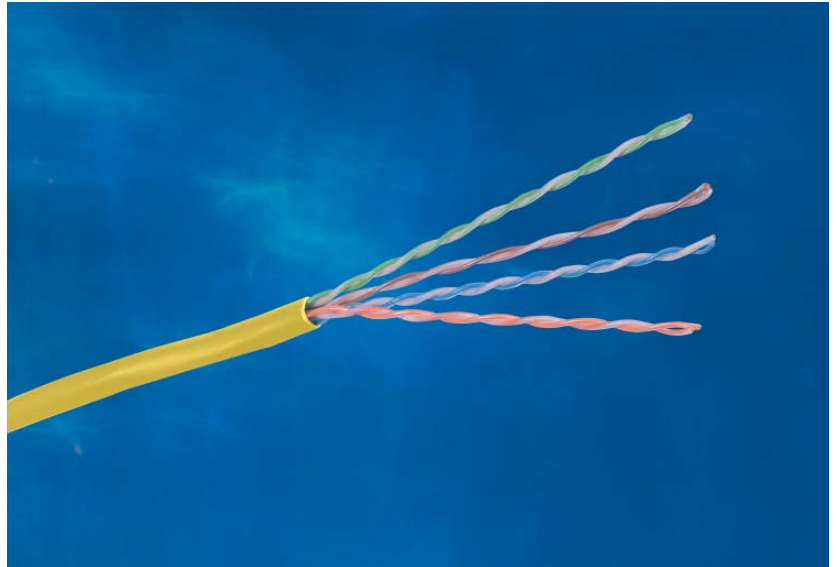
Sweep Tested from 1-350 MHz.

Guaranteed Headroom Over TIA and ISO Category 5e Requirements.

Reverse Sequential Footage Marking.

Backward Compatible to Category 5 and 3.

Category 5e Cable



SPECIFICATIONS

- ◆ **Conductor:** 24 AWG solid bare copper.
- ◆ **Insulation:** CMP: FEP, CMR: Polyolefin.
- ◆ **Pairing**
 - 1: Blue + White/Blue
 - 2: Orange + White/Orange
 - 3: Green + White/Green
 - 4: Brown + White/Brown
- ◆ **Cabling:** Four unshielded twisted pairs.
- ◆ **Jacket**
 - CMP: Low-Smoke PVC.
 - CMR: PVC.

Hubbell's Category 5e cable provides margin above all electrical transmission performance requirements specified in TIA/EIA-568-B.2 and ISO/IEC 11801 (2nd edition) standards.

Hubbell Premise Wiring's component compliant, high-performance connectivity (jacks, panels, cords, blocks) was designed to mate with Hubbell's Category 5e cable creating a high-performance Category 5e system.

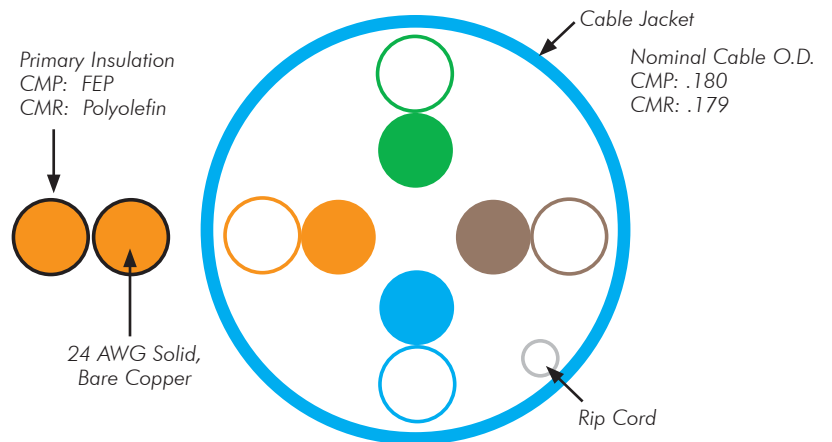
STANDARDS/VERIFICATIONS

- ANSI/TIA/EIA-568-B.2 Category 5e component specifications.
- IEEE 802.3af (PoE).
- UL Listed.
- NEC Article 800 compliant.

APPLICATIONS

- ▲ Ethernet: 10/100/1000BASE-T.
- ▲ 155 Mbps ATM.
- ▲ 4/16 Mbps Token Ring.
- ▲ Analog and Digital VoIP.
- ▲ 100 Mbps TP-PMD.

CABLE FEATURES



ORDERING INFORMATION



Category 5e, 4-Pair, UTP Cable

Color	Catalog No. Riser		Catalog No. Plenum	
	Spool	REELEX*	Spool	REELEX*
Blue	C5ESRB	C5ERRB	C5ESPB	C5ERPB
Gray	C5ESRGY	C5ERRGY	C5ESPGY	C5ERPGY
White	C5ESRW	C5ERRW	C5ESPW	C5ERPW
Yellow	C5ESRY	C5ERRY	C5ESPY	C5ERPY

* REELEX is licensed and patented by Windings Inc.

RELATED PRODUCTS

SPEEDGAIN® Jacks, Category 5e

Order Information

Catalog No. **HXJ5EXX**

- XX** = Color:
'AL' = Almond;
'BK' = Black;
'B' = Blue;
'EI' = Electric Ivory;
'GL' = Gold;
'GY' = Gray;
'GN' = Green;
'OW' = Office White;
'OR' = Orange;
'P' = Purple;
'R' = Red;
'TI' = Telco Ivory;
'W' = White;
'Y' = Yellow.



SPEEDGAIN® Patch Panel, Category 5e

Order Information

Description Catalog No.

- Universal **P5EXXU**
'XX' = Ports
'24' = 24-port, 1.75"H
'48' = 48-port, 3.50"H
'96' = 96-port, 7.00"H



SPEEDGAIN® Patch Cords, Category 5e

Order Information

Catalog No. **PCX5EXX***

- XX** = Standard Color:
'BK' = Black; **'B'** = Blue; **'GY'** = Gray;
'Y' = Yellow

- * = Standard Length:
'01' = 1'; **'03'** = 3'; **'05'** = 5'; **'07'** = 7';
'10' = 10'; **'15'** = 15'; **'20'** = 20'.



See page Full Line Catalog page for product options: color, size, length.

TRANSMISSION SPECIFICATIONS - Worst Case

TIA/EIA-568-B.2 Category 5e Compliant; ISO/IEC 11801, 2nd ed.

Freq. (MHz)	Ins. loss (dB/100m)	NEXT loss (dB)	PSNEXT loss (dB)	ACR (dB)	PSACR (dB)	ELFEXT (dB)	PSELFEXT (dB)	Return loss (dB)
1	2.1	65.5	62.5	63.5	60.5	64.0	61.0	20.2
4	4.2	56.5	53.5	52.4	50.1	52.0	49.0	23.2
8	5.9	52.0	49.0	46.2	43.2	45.9	42.9	24.7
10	6.6	50.5	47.5	44.0	41.0	44.0	41.0	25.2
16	8.3	47.4	44.4	39.2	36.2	39.9	36.9	25.2
31.25	11.8	43.1	40.1	31.3	28.4	34.1	31.1	23.8
62.5	17.1	38.6	35.6	21.6	18.6	28.1	25.1	21.7
100	22.1	35.5	32.5	13.5	10.5	24.0	21.0	20.3
200*	32.1	31.4	29.1	-	-	18.1	15.1	18.2
300*	40.9	28.3	25.3	-	-	14.5	11.5	17.0
350*	48.7	27.8	25.1	-	-	13.8	10.7	15.9

* Frequencies beyond the TIA and ISO requirements are for information only.



Hubbell Premise Wiring

HUBBELL INCORPORATED (Delaware)
 14 Lord's Hill Road • Stonington, CT 06378-0901 • (860) 535-8326 • 800-626-0005
 Fax: (860) 535-8328 • Internet site: <http://www.hubbell-premise.com>

Worldwide Locations

Hubbell Premise Wiring, Asia Pacific
 Hubbell Canada Inc.
 Hubbell Premise Wiring, Central America
 Hubbell Premise Wiring, China
 Hubbell Premise Wiring, Europe
 Hubbell Premise Wiring, India
 Hubbell Int'l. Inc., Korea Branch

852-2836-7131
 905-839-1138
 506-309-4158
 86-21-6374 2660
 44-01283 500500
 91-99001-03341
 (82 2) 2607 1363

Fax: 852-2836-7132
 Fax: 905-839-9108
 Fax: 506-260-1616
 Fax: 86-21-6374 2799
 Fax: 44-01283 500400
 Fax: (82 2) 2603 7386

Hubbell Premise Wiring, Latin America
 Hubbell de Mexico, S.A. de C.V.
 Hubbell Premise Wiring, Middle East
 Hubbell Premise Wiring, Puerto Rico
 Hubbell-Taiwan Co., Ltd., Taiwan
 Hubbell Premise Wiring, Venezuela

305-408-4501
 (5255) 9151-9999
 971-4-393-4192
 787-855-1075
 886-2-2522-1862
 58-212-5156482

Fax: 305-408-8201
 Fax: (5255) 9151-9989
 Fax: 971-4-393-4194
 Fax: 787-855-3265
 Fax: 886-2-2522-1872
 Fax: 58-212-6627258