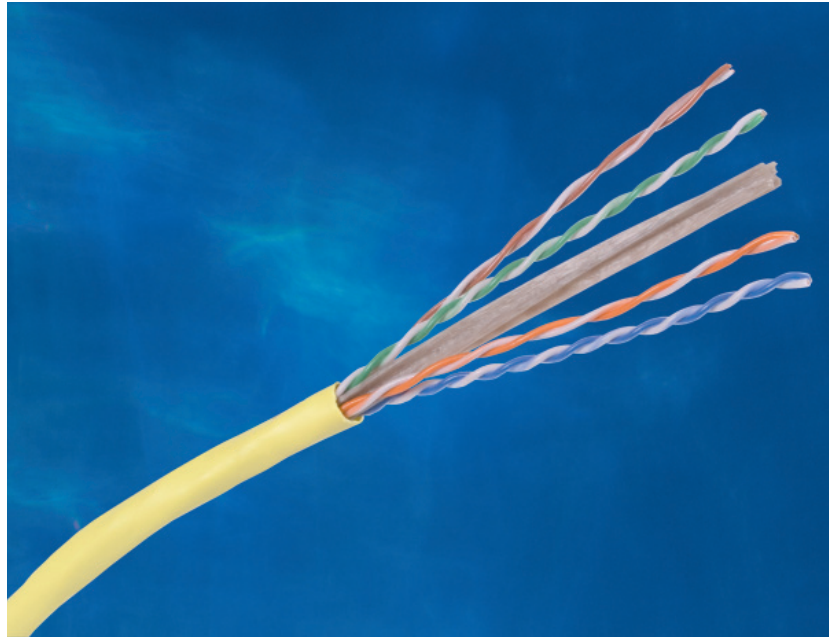




HUBBELL NextSpeed Category 6 Cable

Sweep Tested from 1-500 MHz.
 Guaranteed Headroom Over
 TIA and ISO Category 6
 Requirements.
 Reverse Sequential Footage
 Marking.
 Backward Compatible to
 Category 5e, 5, and 3.



SPECIFICATIONS

- ◆ **Conductor:** 23 AWG solid bare copper.
- ◆ **Insulation:** CMP: FEP, CMR: Polyolefin.
- ◆ **Pairing**
 - 1: Blue + White/Blue
 - 2: Orange + White/Orange
 - 3: Green + White/Green
 - 4: Brown + White/Brown
- ◆ **Cabling:** Four unshielded twisted pairs cabled around a star filler member.
- ◆ **Jacket**
 - CMP: Low-Smoke PVC.
 - CMR: PVC.

Hubbell's **NEXTSPEED**® Category 6 cable provides considerable margin above all electrical transmission performance requirements specified in TIA/EIA-568-B.2-1 and ISO/IEC 11801 (2nd edition) standards.

Hubbell Premise Wiring's high-performance **NEXTSPEED**® connectivity (jacks, panels, cords, blocks) was designed to mate with **NEXTSPEED**® Category 6 cable creating a cabling system that provides optimum electrical performance capabilities of handling critical, high-bandwidth applications.

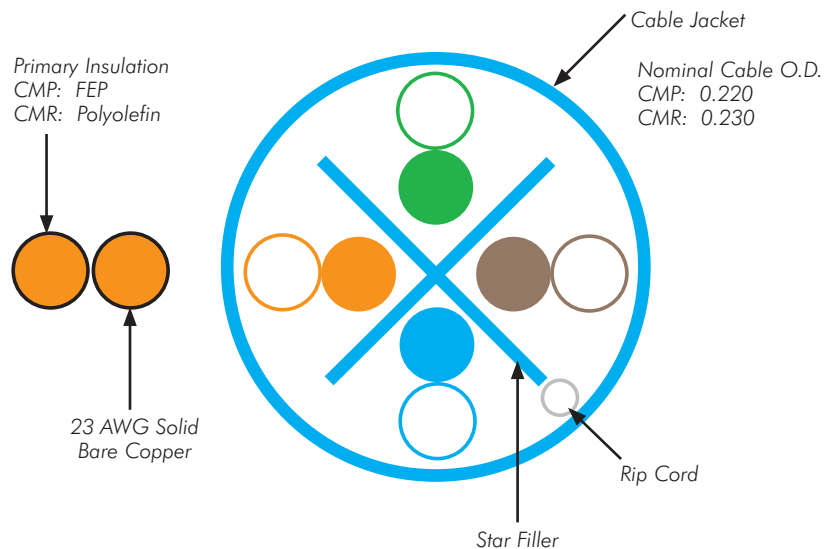
STANDARDS/VERIFICATIONS

- ANSI/TIA/EIA-568-B.2-1 Category 6 component specifications.
- IEEE 802.3af (PoE).
- UL Listed.
- NEC Article 800 compliant.

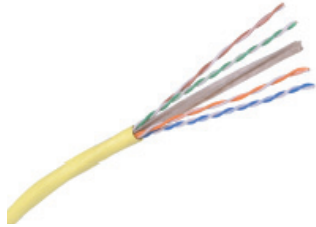
APPLICATIONS

- ▲ Ethernet: 10/100/1000BASE-T, 10GBASE-T (55m).
- ▲ Data centers: Multi-Gigabit between devices
 - Server to server
 - Server to storage
 - Server to switch
- ▲ PoE applications.
- ▲ Bandwidth intense processing:
 - High-resolution 3D modeling
 - On-line document publishing
 - Real-time video to the desktop
 - Broadband video
 - Digital video

CABLE FEATURES



ORDERING INFORMATION



NEXTSPEED® Category 6, 4-Pair, UTP Cable

Color	Catalog No. Riser		Catalog No. Plenum	
	Spool	REELEX*	Spool	REELEX*
Blue	C6SRB	C6RRB	C6SPB	C6RPB
Gray	C6SRGY	C6RRGY	C6SPGY	C6RPGY
White	C6SRW	C6RRW	C6SPW	C6RPW
Yellow	C6SRY	C6RRY	C6SPY	C6RPY

* REELEX is licensed and patented by Windings Inc.

NEXTSPEED® SYSTEM PRODUCTS

NEXTSPEED® Jacks, Category 6

Order Information

Catalog No. **HXJ6XX**

XX = Color:

- BK'** = Black;
- B'** = Blue;
- EI'** = Electric Ivory;
- GL'** = Gold;
- GY'** = Gray;
- GN'** = Green;
- OW'** = Office White;
- OR'** = Orange;
- P'** = Purple;
- R'** = Red;
- TI'** = Telco Ivory;
- W'** = White;
- Y'** = Yellow.



NEXTSPEED® Patch Panel, Category 6

Order Information

Description	Catalog No.
Protected PCB	P6EXXU
Universal Angled	P6XXVU
Non-Protected PCB	P6XXU

XX = Ports

'24' = 24-port, 1.75"H

'48' = 48-port, 3.50"H

'96' = 96-port, 7.00"H



P6E48U

NEXTSPEED® Patch Cords, Category 6

Order Information

Catalog No. **PCX6XX***

XX = Standard Color:

- "BK"** = Black; **"B"** = Blue; **"GY"** = Gray;
- "Y"** = Yellow

* = Standard Length:

- "03"** = 3'; **"06"** = 6'; **"08"** = 8'; **"10"** = 10';
- "12"** = 12'; **"16"** = 16'; **"20"** = 20';



PCX6B03

See page Full Line Catalog page for product options: color, size, length.

TRANSMISSION SPECIFICATIONS - Worst Case

TIA/EIA-568-B.2-1 Category 6 Compliant;
ISO/IEC 11801, 2nd ed. Category 6 Compliant

Freq. (MHz)	Ins. loss (dB/100m)	NEXT loss (dB)	PSNEXT loss (dB)	ACR (dB)	PSACR (dB)	ELFEXT (dB)	PSELFEXT (dB)	Return loss (dB)
1	2.1	75.5	73.5	73.5	71.5	71.0	68.0	20.2
4	3.9	66.5	64.5	62.7	60.7	59.0	56.0	23.2
8	5.4	62.0	60.0	56.7	54.7	52.9	49.9	24.7
10	6.1	60.5	58.5	54.5	52.5	51.0	48.0	25.2
16	7.7	57.4	55.4	49.8	47.8	46.9	43.9	25.2
31.25	10.8	53.1	51.1	42.4	40.4	41.1	38.1	23.8
62.5	15.5	48.6	46.6	33.2	31.2	35.1	32.1	21.7
100	19.9	45.5	43.5	25.7	23.7	31.0	28.0	20.3
200	29.1	41.0	39.0	12.0	10.0	25.0	22.0	18.2
250	32.9	39.5	37.5	6.7	4.7	23.0	20.0	17.5
350*	39.9	37.3	35.3	-	-	20.1	17.1	16.5
400*	42.9	36.5	34.5	-	-	19.0	15.9	16.1
500*	48.8	34.9	32.9	-	-	16.9	13.9	15.3

* Frequencies beyond the TIA and ISO requirements are for information only.



Hubbell Premise Wiring

HUBBELL INCORPORATED (Delaware)
14 Lord's Hill Road • Stonington, CT 06378-0901 • (860) 535-8326 • 800-626-0005
Fax: (860) 535-8328 • Internet site: <http://www.hubbell-premise.com>

Worldwide Locations

Hubbell Premise Wiring, Asia Pacific
Hubbell Canada Inc.
Hubbell Premise Wiring, Central America
Hubbell Premise Wiring, China
Hubbell Premise Wiring, Colombia
Hubbell Premise Wiring, Europe
Hubbell Int'l. Inc., Korea Branch

852-2836-7131 Fax: 852-2836-7132
905-839-1138 Fax: 905-839-9108
506-309-4158 Fax: 506-260-1616
8621-6309-0119 Fax: 8621-6309-0122
571-245-8940 Fax: 571-340-0925
44-01283 500500 Fax: 44-01283 500400
82-2-(0)2607-1363 Fax: 82-2-(0)2603-7386

Hubbell Premise Wiring, Latin America
Hubbell de Mexico, S.A. de C.V.
Hubbell Premise Wiring, Middle East
Hubbell-Taian Co., Ltd., Taiwan
Hubbell Premise Wiring, Turkey
Hubbell Premise Wiring, Venezuela

305-408-4501 Fax: 305-408-8201
(5255) 9151-9999 Fax: (5255) 9151-9989
971-4-393-4192 Fax: 971-4-393-4194
886-2-2522-1862 Fax: 886-2-2522-1872
90-216-313-5016 Fax: 90-216-414-8148
58-416-680-7453 Fax: 58-281-274-7900